

THE OSMONET

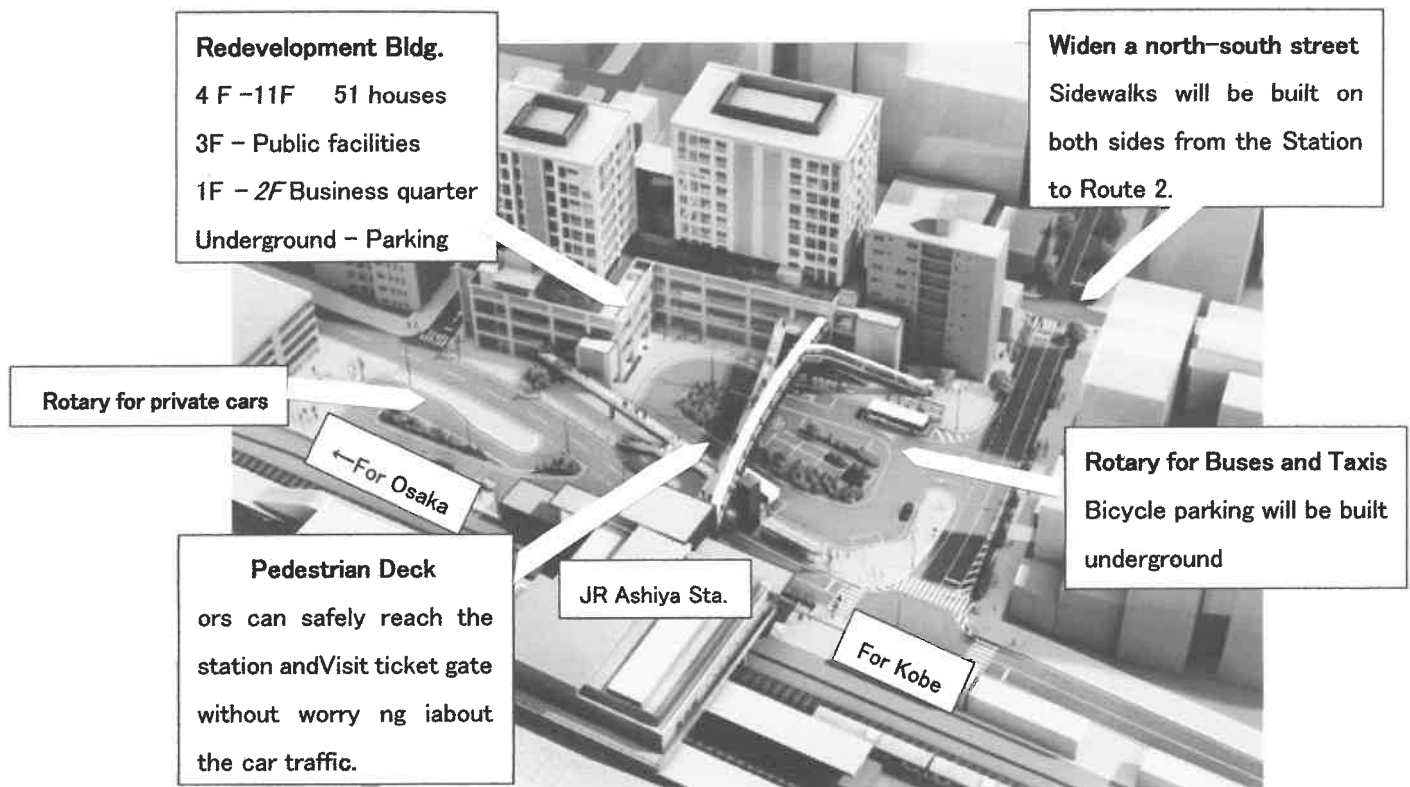
June 2022 (Vol.299)

The following articles are taken mainly from “Koho Ashiya” – the bulletin of Ashiya City (June issue). It is, of course, a Japanese edition, and translated into English by a voluntary group from the Ashiya Cosmopolitan Association.

Please understand that some phone numbers listed under the various events are staffed by people who may not speak English.



The city is engaged in a redevelopment project in the south of JR Ashiya Station in order to solve traffic problems around the station. The project was suspended for about two years due to a series of discussions with the council to clear up future financial concerns. The budget for FY2022 has been finally approved. We will continue the project as soon as possible.



This is a current plan and is subject to change.

Talks on Ashiya's Future (Abridged)

– Ito Mai, mayor vs Matsuki Yoshiaki, City Council chairperson –

Mayor: Ashiya is abundantly blessed with nature and has convenient transportation, and above all residents live here with love and pride. It is a city of high quality.

Chairperson: It is a compact city with a sound community. However, the current population of about 95,000 is expected to decrease to about 65,000 in 40 years. The challenge is how to survive the future declining birthrate.



Mayor: To meet this challenge, we hope to create more space and room without bringing about a loss of quality of services by relocating facilities and making them multifunctional. More and more people are feeling lonely due to Corona. We need to create an open place that is accessible to everyone, incorporating the SDGs concept. I believe “space” will be the new key word from now on. Ashiya has developed as a quiet residential area, but the younger generation is looking for a livelier atmosphere. I would like to create new areas combines both.

Chairperson: We want to make our town a place where young people can have children and raise them with hopes and dreams. Forty years ago, the development of infrastructure was based on the assumption that the population would increase. Now we see a future population decline. The city cannot be financially sustainable if the facilities do not correspond to its size. The administration and the council must work together to determine what to do with the deteriorating facilities.

Mayor: The basic premise of urban development is collaborative creation that cares for the voices of citizens, provides direction for a long-term perspective and keep discussions with the council and citizens. Regarding the redevelopment of the south of JR Ashiya Station, we have received many comments about how the redevelopment is going as the Station is being renovated. We would like citizens to understand the project and its necessity.

Chairperson: The redevelopment budget was passed at the March council meeting. Please move forward with the project based on the council's suggestions and opinions. We hope to see the current issues solved, but also bus stops on the north side of the station relocated to the south. Moreover, we hope that the area is developed in a way that will allow people to flow to the south, leading to Chaya Sakura Street, Former Miyazuka-cho Housing Complex and Miyazuka Park.

Mayor: The projects should not end at a "point" but rather be connected to the development of the area, creating a "line" or "space". It is exactly the kind of development that the city is aiming for. In order to expand the space where people can connect with each other, the redevelopment of the south area of the station will be a beneficial investment for the future.

Inquiries: Urban Improvement Section (Phone: 0797-38-2074)

Evacuation Drill – June 15 (Wed.) 10:00 a.m.

- ◇ Place: Throughout the city
- ◇ Date and Time: Wed., June 15 10:00 a.m.
- ◇ Contents: Disaster Prevention Administrative

Radio will be on air over loudspeakers, then emergency and evacuation information will

be distributed to subscribers. Your understanding and participation in the "Shake out" drill are appreciated to protect yourself during earthquakes.

If you could not hear Disaster Prevention Administrative Radio,

Auto-response Telephone: 0180-99-7787 service is available.

Inquiries: Disaster Prevention and Security Section (Phone: 0797-38-2093)



Information about COVID-19 Vaccination

(This information is accurate as of May 23, 2022.)

COVID-19 vaccination is voluntary. Please decide for yourself whether you will get vaccinated, understanding both the effectiveness in preventing infection and possible side effects.



■ Booster Shots (4th dose) of Coronavirus Vaccine

• **Eligibility:** Those aged 18 or older can receive a fourth dose at least five months after receiving their third dose if they meet either of the following conditions

- ① Those aged at least 60 at the time of vaccination
- ② Those aged 18–59 with underlying conditions or whose doctors decide they are at high risk of developing severe symptoms

• **The period to send out the vaccination voucher:**

The vaccination voucher will be sent out to those eligible approx. ten days before five months have passed since their third shot.

※ Vaccination vouchers will also be mailed to people who are ineligible for the fourth shot at this time, but please keep it safe as you may need it in the future.

※ If you have received COVID-19 vaccines overseas, or if you don't receive your booster voucher even after your vaccination period has passed, please apply by reading the 2D code on the right or contact Ashiya City COVID-19 Vaccine Call Center.



• **Starting date of vaccination:**

Individual medical facilities: From Mon., June 27

(Available at some medical facilities from Mon., May 30)

Mass Vaccination Sites: Every Sun. from July 10 (Except 3rd Sun.)

• **Type of vaccine:** Pfizer-BioNTech or Moderna vaccine

※ Which type of vaccine will be used depends on vaccination dates and sites.

※ For the latest information about the fourth shot, check the city's website on the right.



■ Booster Shots (3rd dose)

Those aged 12 or older can receive booster shots at least five months after receiving their second dose.



※ For a list of individual medical facilities or a type of vaccine, please check the city's website on the left or contact the call center.

■ First Shots (1st & 2nd dose)

Those aged 5 or older are eligible for the 1st and 2nd shots. We will send the vaccination vouchers around the 20th of every month to children who turn 5 years old in the following month.

※ **For children aged 15 or younger who receive the first or booster shot (3rd dose)**

Things to bring: • Vaccination voucher • Pre-vaccination screening questionnaire

• ID of the child who receives a shot • Parental consent

• Maternal and Child health handbook • ID of the guardian

***The child must be accompanied by a parent or guardian.**

■ **How to Make a Reservation**

◆ **Online (Web) Reservation:** Make a reservation online from City Website.

◆ **Ashiya City COVID-19 Vaccine Call Center** (Phone: 0797-31-0655)

Hours: 9:00 a.m.-5:30 p.m. (including Sat., & Sun.)

- Please make sure to dial the correct number.
- When you call, please make sure to have your vaccination coupon ready.
- For those who need special assistance due to hearing or language problems, please fax us for consultation. (Fax: 0797-31-1018)



Notification on Physical Strength Measurement

Your flexibility, muscle strength, agility, equilibrium and body composition will be measured, then advice and consultation will be provided based on the results to improve your physical health and help you avoid the need for nursing care.

■ **Date & Time:** Mon., June 27 ① 9:30-10:30 a.m. ② 10:30-11:30 a.m.

③ 1:00-2:00 p.m. ④ 2:00-3:00 p.m. ⑤ 3:00-4:00 p.m.

■ **Capacity & Eligibility:** People aged 65 and older, First 10 people each

■ **Place:** Health and Welfare Center, 2F

■ **Things to bring:** A towel, indoor shoes, a drink

■ **Application:** Apply to the following center from June 1. (Appointment required)

■ **Inquiries:** Frailty Prevention Center (Phone: 0797-31-0628) (Weekdays: 9:00 a.m.-5:00 p.m.)



Landslide Safety & Preparedness

Typhoons and torrential rains are prone to occur during the months of June through October. Various locations throughout Japan have been hit by major landslide disasters. Take necessary precautions and make adequate preparations in your daily lives to reduce damage to a minimum.

◆ **Points to keep in mind when evacuating from landslide damage**

- ① Choose an escape route at a right angle to the flow of mudslides.
- ② Evacuate to a highest place possible.

◆ **How to access landslide information:**

◇ **Hyogo Prefecture "Levels of Landslide Risk by Area":** Information on the amount of rainfall or areas at high risk of landslide

◇ **Ashiya City Website** ◇ **Ashiya Bosai Net** ◇ **Facebook/Twitter** ◇ **J:COM Channel**

◇ **Portable Emergency Radio** ◇ **J:COM Channel**

◇ **The Ashiya Disaster Prevention Wireless Radio System**

◇ **Automatic Answering Phone** (☎ 0180-99-7787)

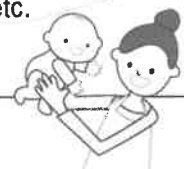

□ **Inquiries:** Disaster Prevention and Security Section (Phone: 0797-38-2093)



Welfare Medical Expenses Subsidy System



◇ **Inquiries:** Welfare and Medical Services Subsection,
Community Welfare Section (Phone: 0797-38-2076)

Medical Category	Age Group, etc.	Standard Income Threshold (FY2021 Income)
Subsidy for the Pre-Elderly	Individuals between the ages of 65 and 70, starting and ending on their month of birth respectively. For those born on the 1st of a month, the previous month applies.	Individuals in a municipal tax-exempt household who satisfy one of the conditions below: ◇ All members of the household do not have any income or have a pension income of 800,000 yen or less. ◇ The recipient is certified as Long-Term Care Required Level 2 or higher and has a total income of 800,000 yen or less when combining their pension and any other income.
Medical Expenses Subsidy for Infants and toddlers, etc.	0-year-olds	—
Medical Expenses Subsidy for Children	Children one year of age and older, up to the end of 3rd grade of elementary school	The municipal (ward) resident tax per income levy is below 235,000 yen for each parent/guardian, etc. 
	Children in 4th grade of elementary school and above, up to the end of junior high school (the first March 31 after their 15th birthday).	
Medical Expenses Subsidy for Single-Parent Households	◇ Fathers and mothers, and their children in single-parent households, etc. ◇ Children bereaved by the death of their parents, etc. ◇ Caregivers without a spouse who support children without any parents ※ All of the above applies to children until the first March 31 after the child's 18th birthday.	Income below 1,920,000 yen for those without any dependents. 380,000 yen is added for each dependent to the 1,920,000 yen threshold.
Medical Expenses Subsidy for the Disabled	Individuals with a Physical Disability Certificate (Grades 1, 2, or 3), Intellectual Disability Certificate (A or B1), or Mental Disability Certificate (Grades 1 or 2)	Municipal (ward) resident tax per income levy is below 235,000 yen for each recipient, spouse, and supporter under duty. 
Medical Expenses Subsidy for the Disabled Elderly	Insured persons under the Medical Care System for the Latter-Stage Elderly [ages 75 and over] with a Physical Disability Certificate (Grades 1, 2, or 3), Intellectual Disability Certificate (A or B1), or Mental Disability Certificate (Grades 1 or 2)	

◇ Renewal of Welfare Medical Expenses Recipient Certificates

The current Welfare Medical Expenses Recipient Certificates (福祉医療費受給者証 *fukushi iryo-hi jyukyu-sha-sho*) will expire on Thu., June 30, 2021. New certificates will be sent to eligible persons at the end of June. The certificates may not be sent until July or later if the evaluation of income takes longer. If you should visit a medical institution before your certificate arrives, be sure to keep the receipt as you may apply for a refund.

◇ **Submit a Current Status Report**

A Current Status Report (現況届 *genkyo todoke*) needs to be submitted for the Medical Expenses Subsidy for Single-Parent Households (母子家庭等医療費助成制度 *boshi-katei to iryouhi jousei seido*). The subsidy will not be granted without submitting the report.

◇ **Appropriate use of Medical Institutions and Pharmacies**

Except in cases of emergency, please avoid seeking medical care after hours, late at night, and on holidays. Bring your prescription notebook (お薬手帳 *okusuri techo*) to avoid taking too many medications.



◇ **Inquiries:** Welfare and Medical Services Subsection, Community Welfare Section

(Phone: 0797-38-2076)

Child Allowance & Special Benefits

Child Allowance (児童手当 *jido teate*) and Special Benefits (特例給付 *tokurei kyufu*) from February to May will be deposited into designated accounts on Wed., June 15.

※ Payments cannot be made without a Current Status Report (現況届 *genkyo todoke*). If you are yet to submit one, please do so as soon as possible to the Children Subsection, Child-rearing Policy Section.

◇ **Eligibility:** Recipients of Child Allowance or Special Benefits.

◇ **Changes from October Payments:**

- Those with an income above a set maximum amount will no longer receive the allowance.
- Submission of Current Status Report will no longer be required for continued payment. There are some exceptions.



◇ **Inquiries:** Children Subsection, Child-rearing Policy Section (Phone: 0797-38-2117)

Special Benefit for Supporting Families with Children

Low-income families with children are eligible to receive the Special Benefit for Supporting Families with Children (子育て世帯生活支援特別給付金 *kosodate setai seikatsu shien tokubetsu kyufu-kin*).

◇ **Benefit Amount:** 50,000 yen per eligible child

※ For eligibility and other information, please refer to the Ashiya City website or contact the Children Subsection, Child-rearing Policy Section.

◇ **Inquiries:** Children Subsection, Child-rearing Policy Section (Phone: 0797-38-2045)
Counter No.17, South Wing 1F, City Hall



ASHIYA TRIANGLE, Ashiya Public Relations TV Program (CH11/15 min.)

Broadcast Time: ①9:00 a.m. ②12:00 noon ③4:00 p.m. ④8:00 p.m. ⑤10:00 p.m.



Water Leak and Water Supply Pipe Repairs

- Weekdays during the daytime ➤ **Waterworks Customer Service Center**
- Saturdays, Sundays, public holidays, and during the night ➤ **City Hall**

☎0797-38-2082

☎0797-31-2121

FY2022 One-Time Special Benefit for Resident's Tax-Exempt Households

住民税非課税世帯等への臨時特別給付金 *jumin-zei hi-kazei setai to eno rinji tokubetsu kyufu-kin*

◇ **Eligibility:** Households that satisfy either of the conditions below are eligible.

- Households ① – Those who are recorded in the Basic Resident Registry as of June 1, 2022, and all members of the household are exempt from Resident's Tax (per capita) for the fiscal year 2022.
- Households ② – Those whose income has dropped significantly since January 2022 due to the coronavirus, and who are deemed to be in an equivalent circumstance as those in Households ① above.

※ Households that consist solely of dependents of a person subject to Resident's Tax and households that have already received the benefit are excluded.

◇ **Application:**

- Households ① – Confirmation letters will be mailed as soon as they are ready.
- Households ② – Details will be available on the Ashiya City website as soon as they are finalized.

◇ **Inquiries:** 住民税非課税世帯等臨時特別給付金担当 (Call Center: 0797-38-2053)

Jumin-zei Hi-kazei Setai to Rinji Tokubetsu Kyufu-kin Tanto weekdays, 9:00 a.m.–5:00 p.m.



Rainwater Storage Installation Subsidy

◇ **Eligible Storage Units:** Rainwater storage tanks with a capacity of 100 liter or more that are marketed for watering purposes and meet Ashiya City standards.

◇ **Eligible Persons:** Ashiya City landowners and house owners, and individuals permitted by an owner to install and use such equipment. Other conditions may apply.

◇ **Subsidy:** Half of the total cost of the equipment and installation combined up to 30,000 yen per unit.

◇ **Application:** Submit required documents by Fri., December 23, 2022, to the Sewerage Section. Applications must be made before purchasing the storage unit. Documents may be downloaded from the Ashiya City website.

◇ **Inquiries:** Sewerage Section (Phone: 0797-38-2067)



Monthly First Aid Class

◇ **Date & Time:** Sun., June 26, 9:30 a.m.–12:30 p.m.

◇ **Place:** Fire Department Building

◇ **Program:** CPR, AED, and first aid training

A certificate of completion will be issued.

◇ **Capacity:** The first 20 applicants. Junior high school students or older, living, working, or studying in Ashiya City.

◇ **Registration:** Call the Emergency Section by 5:30 p.m., Fri., June 24.

Group reservations are accepted at any time.

◇ **Inquiries:** Emergency Section, Fire Department Headquarters (Phone: 0797-32-2345)



Doctors on Call for Emergencies on Sundays and Holidays



●Evening Medical Care Rotation *8:00 p.m.–11:00 p.m. on Friday		
June 3	Ashiya Sunny Clinic (Internal Medicine)	☎ 0797-61-5515
June 10	Ueda Internal Medicine Clinic (Internal Medicine)	☎ 0797-34-1878
June 17	Matsuba Clinic (Internal Medicine)	☎ 0797-22-1641
June 24	Ashiya St. Maria Hospital (Surgery/Internal Medicine/Orthopedics)	☎ 0797-23-1771

•Be sure to wear a mask when you visit the doctor or a hospital.

•First make a call when you have a fever.

■Emergency Relief Center ☎ #7119 (24/7) ※IPS Phone: 078-331-7119

■Designated Emergency Hospital

Ashiya Municipal Hospital (Surgery/Internal Medicine) ☎ 0797-31-2156

Minami-Ashiyahama Hospital (Surgery/Internal Medicine) ☎ 0797-22-4040

Ashiya St. Maria Hospital (Orthopedics/Surgery/Internal Medicine) ☎ 0797-23-1771

■Holiday Emergency Clinic (Internal Medicine/Pediatrics) ☎ 0797-21-2782

(5-13 Kimmitsu-cho, Ashiya City) (9:00 a.m.–5:00 p.m. on Sundays, public holidays, during the year-end and New Year's holidays)

■Amagasaki Health Medical Care Foundation Holiday/Night Emergency Medical Care (Ear, Nose and Throat) ☎ 06-6436-8701

(3-15-20 Mizudo-cho, Amagasaki City)

(9:00 a.m.–4:00 p.m. on Sundays and public holidays / 6:00 p.m.–8:30 p.m. on Saturdays)

(9:00 a.m.–5:30 a.m. the next morning during the year-end and New Year's holidays)

■Amagasaki Health Medical Care Foundation Holiday/Night Emergency Medical Care (Ophthalmology-Eye Department) ☎ 06-6436-8701

(3-15-20 Mizudo-cho, Amagasaki City)

(9:00 a.m.–4:00 p.m. on Sundays and public holidays)

(9:00 a.m.–5:30 a.m. the next morning during the year-end and New Year's holidays)

■Dental Center (14-9 Kurekawa-cho, Ashiya City) ☎ 0797-31-0658

(9:00 a.m.–11:30 a.m. on Sundays, public holidays, during the year-end/New Year's holidays)

■Kobe Children's Primary Emergency Medical Center (Pediatrics) ☎ 078-891-3999

Consultation Days	Reception Hours
Monday-Friday	7:30 p.m.–6:30 a.m. the next morning
Saturday	2:30 p.m.–6:30 a.m. the next morning
Sunday & public holiday The year-end/New Year's holidays	8:30 a.m.–6:30 a.m. the next morning

Hello ! We are *Minsei Iin* and *Jidou Iin* ~ The Community's Closest Advisers ~

Minsei Iin (民生委員): A social welfare worker

Jidou Iin (児童委員): A social welfare worker for children

■ Inquiries: Community Welfare Section (Phone: 0797-38-2113)

What are *Minsei Iin* / *Jidou Iin* ?

We have various activities as volunteers in the community. We watch, advise and support people from the young to the elderly, so they are able to live safely and at ease in the community.

Currently, 106 *Minsei/Jidou Iins* are active, and 6 of them are "*Shunin Jidou Iin*" (主任児童委員, *Special Jidou Iin*) who are in charge of matters concerning children.

● We have a duty of confidentiality and will never disclose the content obtained in the course of our activities, so please feel free to consult us about your troubles.

[Listen to someone's story]

We listen actively, response warmly and provide precise information to all adults and children as a close adviser.

Have any trouble ?



I'm tired of caring for my spouse !

Parenting is not going well...

[Watch]

We watch over anyone who needs assistance to stay safe and secure in the community through visiting activities to babies as well as the elderly or disabled

Activities:

- Watching children on the way to school
- Visiting the babies
- Visiting the elderly or the disabled, etc.



[Connect]

Intermediate between those in need (Adults and children) and government or professional organizations like:

- Council on social welfare
- Livelihood support center for the elderly
- Child rearing support center, etc.



~ From an Interview ~ Comments by *Minsei / Jidou Iins*

- ★ Although I work for a company, I was not worried about taking this role as a *Minsei Iin* as I can ask the predecessor for advice when I don't know what to do. I volunteer mainly on holidays. (Ms. Kotani)
- ★ I am a retired teacher. As an uncle of the community, I can get to know local people while meeting with them. It is really worth volunteering. (Mr. Miyata)
- ★ Last year, after 15 years of experience as a care staff, I faced caring for my mother. Although I was at a loss sometimes, with advice from the regional Livelihood Support Center for the Elderly, my mind has been opened up slowly. Now I can volunteer as a *Minsei Iin* while caring for my mother. I want to help people in the community. (Ms. Tanigawa)



Ms. Kotani



Mr. Miyata



Ms. Tanigawa

New Name for Large/Small Halls of Citizen's Center Renaissance Classics Ashiya Luna Hall

DAF Corporation has been selected as the naming partner for the Large/Small Halls of Citizen's Center.

The new name for the Halls is:

Renaissance Classics Ashiya Luna Hall

- ☐ Term: April 1st ~ March 31st 2027 (5 years)
- ☐ Inquiries: Citizen's Center (Phone: 0797-31-4995)



My Number Card

- Place: 1F City Hall North Wing
- Inquiries: My Number Desk, Citizens' Section
(Phone: 0797-38-2070)

[Services available with My Number Card]

- (1) My Number card can be used as an ID document
 - (2) A resident card and some other certificates can be received cheaply at convenience stores.
 - (3) Tax returns and other online procedures are available.
 - (4) It can be used as a health insurance card. (Separate registration is necessary.)
 - (5) Use of the New Corona Vaccination Certificate (Electronic version)
 - (6) Receipt of Myna Points
- * Uses such as a library ticket (from September 2022) or a driving license (at the end of fiscal year 2024) are also planned.



[Sat. June 4th: My Number Card Issuing Counter Opens]

- Time/Place: 9:00 a.m.-1:00 p.m. 1F City Hall North Wing
- Content: Receipt of My Number Card / Renewal of digital ID documents

[My Number Card On-Site Application]

City staff will visit groups or organizations who wish to apply for My Number Card, will take a photo for application and accept applications free of charge. Please use this service for those who have difficulty coming to the City Hall, etc.

- Term: Until the end of March 2023
- Eligible group: A group consisting of 5 persons or more

[Myna Points #2] ~Why not Get Myna Points with My Number Card ?

Those who have got My Number Card and have not applied for Myna Points at the end of September 2022 can receive up to 5,000 yen worth of points for recharging or shopping. Also, with Public Money Receiving Account Registration and Health Insurance Card Usage Registration, you can receive 7,500 yen worth of points for each of them. There are some cashless payment services which require procedures separately.



Welfare Benefits for Elderly Foreign Citizens without Pension



■ **Deadline of Application for the Welfare Benefits: June 10th**

■ **Eligibility:** A resident of Ashiya City who was born on or before April 1, 1926 and who meets any of the following requirements:

- (1) Anyone who had registered his/her place of residence within Japan as of January 1, 1982 under the Alien Registration Law.
- (2) Anyone who registered his/her place of residence on or before January 1, 1982 under the Alien Registration Law, and obtained Japanese nationality on or after April 1, 1961, and cannot fulfill the residency requirement for institutional pension eligibility.
- (3) A Japanese national who lived abroad for a long time, and returned on or after April 1, 1961, but cannot fulfill the residency requirement for institutional pension eligibility.

N.B. The following persons, even though they meet any of the above requirements, are not eligible:

- Recipients of public pension, etc. (712,000 yen or more per year)
- Recipients of Ashiya City special benefits for the handicapped with a high degree of disability
- Recipients of Livelihood Subsidies
- Those whose total individual income, and his/her spouse, and any supporters exceeds the limitation amounts.

■ **Monthly Allowance: 33,208 yen**

■ **Inquiries:** Management Subsection, Citizens' Section

(Phone: 0797- 38-2030)



- We Will Support Your Learning -

Accepting Application for Ashiya City Scholarship

☐ **Eligibility:** Those who are experiencing difficulties attending school because of financial reasons and meet all of the following criteria



- ◆ Being enrolled in high school; the latter half course of secondary educational School; a technical college (grades 1-3); a special needs school (upper division); or the upper division of an equivalent school
- ◆ The person who maintains applicant's livelihood lives in Ashiya city (registered as a resident, in principle).
- ◆ The annual income of the person who maintains applicant's livelihood is below base amount, unemployed or is expected to become below base amount because of sudden change in household budget.



* If the applicant is a recipient of Hyogo Prefecture Scholarship Benefits, he may not be able to receive it at the same time (except the students enrolled in correspondence course.)

☐ **How to Apply:** Submit the required documents, which are distributed at each school or Board of Education from June 1, to the Management Section by Fri., July 15th.

☐ **Inquiries:** Management Section, Board of Education (Phone: 0797-38-2085)

-National Pension Insurance Premiums-
Application for Exemption / Postponement of Payment



This system serves those who are experiencing difficulty paying National Pension Insurance Premium due to unemployment or income reduction, etc.

<Exemption>

There are four kinds of exemption: “Total exemption”, “Three-quarters exemption”, “Half exemption” and “One-quarter exemption”. The exemption period is added to the recipient qualification period, and will be partially reflected in the future pension amount according to the kinds of exemption.

Premiums:

Kinds of Exemption	Insurance premiums
Total exemption	0 yen
Three-quarters exemption	4,150 yen
Half exemption	8,300 yen
One-quarter exemption	12,440 yen

<Payment Postponement>

Even though the postponed period is added to the recipient qualification period, it will not be reflected in the future pension amount .

■ **Eligibility:** Anyone whose previous year’s income and that of his/her spouse and head of household did not exceed the base amount.

■ **How to Apply:**

Come to the Management Subsection (Pension Desk), Citizens’ Section with your Identification documents (My Number Card, for example) and certificate of the unemployed, etc. in case of unemployment.

<Additional Payment of Insurance Premiums>

You can make additional payment of the insurance premiums for the exempted or postponed period within 10 years. Additional payments will be reflected in the future pension amount.



■ **Inquiries:** Pension Desk, Management Subsection, Citizens’ Section
(Phone: 0797-38-2036)

Exemption from Individual Municipal/Prefectural Residential Tax

Exemption from individual municipal/prefectural residential tax is possible

■ **Eligibility:** Those who meet certain requirements, such as loss of employment, reduction in income to half of the previous year’s income, etc.

■ **How to Apply:** Make application to Municipal Tax Subsection, Taxation Section by the time for payment. Application by mail is also available.

* Tax already paid and overdue tax payments are ineligible.

■ **Inquiries:** Municipal Tax Subsection, Taxation Section (Phone: 0797-38-2016)



~The 70th Fureai Cinema Salon~
Human Rights Enlightenment Movie: "Kodomo Shokudo"

□Date & Time: Sat., July 2, ① 10:00 a.m.- ② 1:30 p.m. - (100 min.)
 (Doors open 30 min. before each screening)

□Place: Kamimiyagawa Cultural Center, 3F Hall

□Capacity: 150 people each screening

* Daycare is available for children of six-month-old to preschool age.
 (3 children/each) (Reservation required)

□Things to bring: Indoor shoes, a bag for shoes

□Application: Call the following center between June 1 and 24. (Except Sun.)

□Inquiries: Human Rights and Gender Equality Section (Phone: 0797-38-2055)



Human Rights Theater "Angry Rice Wives (Dai Kome Sodo)"

■Date & Time: Sat., June 11, ① 10:00 a.m.- ② 1:30 p.m.- (106 min.)
 (Doors open 30 min. before each screening)

■Place: Kamimiyagawa Cultural Center, 3F Hall

■Capacity: 60 people each screening

■Things to bring: Indoor shoes, a bag for shoes

■Application: Call the following center from 9:30 a.m. on Wed., June 8.

■Inquiries: Kamimiyagawa Cultural Center (Phone: 0797-22-9229)



~Gender Equality Week Project Movie~
"Double Shift (Papa no Kosodate Funtoki)"

□Date & Time: Sat., June 25, ① 10:00 a.m.- ② 1:30 p.m.-
 (Doors open 30 min. before each screening.)

□Place: Gender Equality Center (With-us Ashiya)

□Capacity: 40 people each screening

* Daycare is available for children of six-month-old to preschool age.
 (6 children/each, 300 yen/per child) (Reservation required)

□Application: Apply by reading 2D code on the right from 9:00 a.m. on Wed., June 1.

□Inquiries: Gender Equality Center (Phone: 0797-38-2023)



Monthly Tennis Class Offering Useful Tips

◆Date & Time: Wed., June 22, 9:30 a.m.-10:40 p.m.

◆Place: Nishihama Park Tennis Courts ◆Fee: 1,500 yen

◆Eligibility: Elementary to intermediate-level players

◆Things to bring: Clothes fit for sports, tennis shoes, a drink

◆Application: Apply by phone or at the office counter by June 15..

◆Inquiries: Gymnasium and Youth Center (Phone: 0797-31-8228)



Why not Join Youth Firefighting Club?

Join us in experiencing firefighting activities to acquire knowledge about fire prevention.

- ☐ Eligibility: 2-5 graders of elementary school living in Ashiya city
- ☐ How to Apply: Fill in the application form (can be downloaded from the 2D Code on the right) and send us by mail, fax or E-mail.



- ☐ Place and Inquiries: Prevention Section, Fire Department Headquarters
(Phone: 0797-32-2345 / Fax: 0797-32-0119 / E-mail: shobo_yobo@city.Ashiya.lg.jp)

Please Know this "Help Mark"

Here are people in need of your help and consideration.

This mark is carried by those people who have an internal physical disorder, or are in early pregnancy, etc. and need attention from the people around, but actually hard to be noticed from outward appearance. If you notice this "Help Mark", you are requested to act with consideration, such as offering your seat in the train, bus, etc.



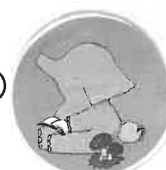
- ◆ Inquiries: Community Welfare Section (Phone: 0797-38-2153)



niwa-doku 2022

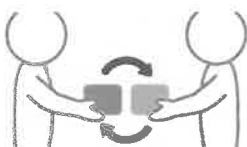
Enjoy bringing in your favorite books and reading at your favorite spots !

- Date and Time: Sun., June 5th 10:00 a.m.-4:00 p.m.(Will be cancelled in case of rain)
- Place: Gardens of Art Museum / Tanizaki Junichiro Memorial Museum



Niwa-doku character

<Book Exchange>



Exchange favorite books and experience new books !

- * Unclean books, magazines, texts, explanatory booklet, etc. are not exchangeable.
- * Up to 5 books per person.



<Let's read picture books together>

We will read picture books. Both children and adults are welcome !



Garden of Tanizaki Museum

<A Sketchbook under the Blue Sky>

Let's paint together on the big canvas prepared in the Art Museum garden ! Have a nice time between readings.



- Inquiries: Museum of Art and History
(Phone: 0797-38-5432 Fax: 0797-38-5434) (12-25 Ise-cho 659-0052)

Windows 10 PC Classes



■ **Date:** Wed., July 6th and 13th

■ **Time and Course:**

(1) 10:00 a.m.–Noon “Zoom experience; let’s enjoy communicating with distant relatives and friends” (1 class)

(2) 1:00–3:00 p.m. “Course for women to acquire know-how of EXCEL, useful for family finances” (2 classes)

■ **Eligibility, Capacity and Cost:**

(1) 6 people for each day 500 yen

(2) 6 females who can attend both days 1,000 yen

■ **What to bring:** Writing materials, an attendee’s ticket and fee

* We use permanent laptop computer; carrying in of a computer is not admitted.

■ **How to Apply:** Send a fax or a postcard with your name and address, age, phone number, class name and day you want to take by Mon., June 20th.
We will let you know the result by a postcard.

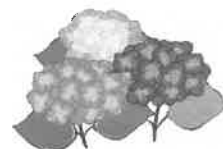
■ **Mailing address and Inquiries:**

Kamimiyagawa Cultural Center, 10-5 Kamimiyagawa-cho 659-0061

(Phone: 0797-22-9229 / Fax: 0797-22-1659)



Gardening Classes at Ashiya Grand Park (*Sogo Koen*)



Content (Class name)	Date /Time	Cost	Application Deadline
① “How to grow roses”	Tue., June 7 th 1:30–3:00 p.m.	Free	5:00 p.m. Mon., June 6 th
② “Enjoy growing vegetables (3)”	Thu., June 9 th 10:30 a.m.–Noon	500 yen	5:00 p.m. Mon., June 6 th
③ “Become a master of flower growing (2) (Living with greenery) ~Cutting ~”	Wed., June 15 th 10:30 a.m.–Noon	500 yen	5:00 p.m. Wed., June 8 th
④ “Make an arrangement with hydrangeas”	Thu., June 16 th 10:30 a.m.–Noon	2,500 yen	5:00 p.m. Thu., June 9 th
⑤ “Why not grow hydrangeas?”	Sun., June 19 th 10:30 a.m.–Noon	1,500 yen	5:00 p.m. Sun., June 12 th
⑥ “Create a charming pot of assorted color leaves”	Mon., June 20 th 1:30–3:00 p.m.	2,500 yen	5:00 p.m. Mon., June 13 th
⑦ “Make a pot of assorted edible succulent plants”	Sat., June 25 th 10:30 a.m.–Noon	1,000 yen	5:00 p.m. Sat., June 18 th

* Capacity: 15 persons for each class

* What you should bring: Writing materials and a bag to take the work home

* How to Apply: Visit, call/fax or E-mail to Ashiya Grand Park by each deadline.

* Location and Inquiries: Ashiya Grand Park (*Sogo Koen*)

(Phone: 0797-38-2103 / Fax: 25-2026 / E-mail: ashiyasogo@mizuno.co.jp)



Let's Cook and Eat International Food: British Food

- ☐ Date & Time: Mon., July 11, 10:00 a.m.–2:00 p.m.
- ☐ Place: Shio-Ashiya Exchange Center, Cooking Room
- ☐ Menu: Chicken, mozzarella and basil wrapped in prosciutto, Herb oven-baked tomato, Cheese and onion bread, Langue de chat
- ☐ Instructor: Mr. Carl Sellman (An English national living in Ashiya)
- ☐ Capacity & Fee: 14 people/2,800 yen (Reservation required)

* Please contact us two weeks before the class date to cancel.

Otherwise, you will be charged for material costs.

- ☐ Things to bring: A dish cloth, an apron, a mask, triangular kerchief, writing utensils
- ☐ Application: Apply by phone from 9:00 a.m. on Thu., June 2.
- ☐ Inquiries: Shio-Ashiya Exchange Center (Phone: 0797-25-0511)



Shio-Ashiya Seminar: RAKUGO in English/Japanese

- Date & Time: Sun., June 26, 2:00–3:00 p.m.
- Place: Shio-Ashiya Exchange Center, 2F
- Performer: Katsura Fukumaru
- Capacity: 100 people (Elementary school children and older)
- Fee: Advance ticket 1,000 yen, Same-day ticket 1,200 yen

* Free for elementary school children

- Application & Inquiries: Shio-Ashiya Exchange Center (Phone: 0797-25-0511)



Free Tennis Day for Ashiya Citizens at Ashiya Park Tennis Courts

- ☐ Date and Time: Thur., July 7, 9:00 a.m.–1:00 p.m.. (Cancelled in case of rain)
 - ☐ Place: Ashiya Park Tennis Courts
 - ☐ Eligibility: Those who reside, work or study (high school students and up) in Ashiya City
- * Junior high school students or younger should be accompanied by their guardians.
- ☐ Capacity: First 80 people (up to 4 people per application)
 - ☐ Things to bring: Tennis wear, tennis shoes, racket, tennis ball
 - ☐ Fee: 300 yen/person
 - ☐ Application: Fill out the designated application form, which can be obtained at the following office or from the city's website, and fax or submit it to the office between 9:00 a.m. on June 1 and 7:00 p.m. on June 25.
 - ☐ Inquiries: Ashiya Park Tennis Courts (Phone: 0797-34-8886/Fax: 0797-34-8884)



Health Center Announcements

■ 40-50-60 Year Old Dental Check-up Coupons



Dental check-up coupons will be mailed to those who are either 40, 50, or 60 years of age as of April 1, 2022. Please take this opportunity to see a dentist.

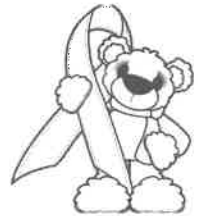
◇ **Location:** A dental clinic (appointment required)

■ Cancer Screening and Hepatitis Virus Test Coupons

Free cancer screening and hepatitis virus test coupons will be mailed. Please take this opportunity to be tested.

◇ **Eligibility:** Citizens aged below as of April 1, 2022.

- Cervical Cancer Screening 20-year old females
- Breast Cancer Screening..... 40-year-old females
- Large Intestine Cancer Screening 40-year-olds (male and female)
- Hepatitis Virus Test (for those never been tested) ... 40-year-olds (male and female)



◇ **Inquiries:** Health Center

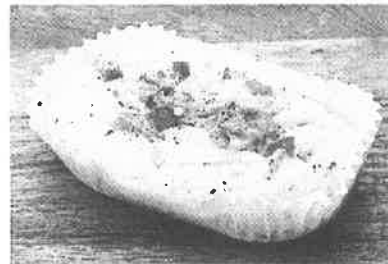
Phone: 0797-31-1586

Ashiya School Lunch Recipes

■ Tuna Mayo Steamed Bun

□ Ingredients

- | | |
|-------------------------------|-----------------------|
| 165 g flour (soft/cake flour) | 80 g canned tuna |
| 4 g baking powder | 4 tsp mayonnaise |
| 50 g sugar | 50 g onions (sliced) |
| 150 g milk | 10 g red bell peppers |
| 2.5 tsp vegetable oil | (finely chopped) |
| | pepper to taste |



➤ **Helpful Tips:** Silicon containers or milk cartons lined with parchment paper may be used instead of baking cups. A frying pan may be used to steam the buns.

□ Directions:

1. Combine flour, baking powder, and sugar and sift in a colander.
2. Add milk and vegetable oil to dry ingredients, and mix well.
3. Divide batter into 5 baking cups.
4. In a separate bowl, drain tuna and mix with onions, bell peppers, and mayonnaise to make tuna salad.
5. Put tuna salad on the divided batter and press it down. Sprinkle with pepper.
6. Steam in a pot over high heat for 10 minutes. Insert a bamboo skewer into the bun to make sure they are ready to be served.



Ashiya Suiren Gakkou (Swimming School) Available for Students

- ☐ Period: July 25th – August 24th ☐ Time: 8:30–11:00 a.m.
- ☐ Place: Asahigaoka Park Swimming Pool ☐ Fee: 22,000 yen
- ☐ Eligibility and Capacity: 400 elementary, junior and senior high school students
- ☐ Application and Inquiries: Scan the code between June 11th and June 18th . →



Healthy and Refreshing Water Stretch

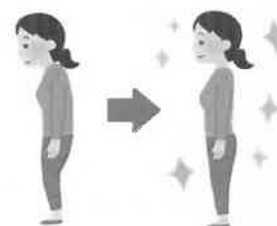
- ◆ Course and Date:
 - (1) Tuesday course (July 12th ~Oct. 4th 11 lessons)
 - (2) Thursday course (July 14th ~Oct. 6th except holiday 11 lessons)
 - (3) Friday course (July 15th ~Oct. 7th except holiday 11 lessons)
- ◆ Time: 9:15 – 10:45 a.m.
- ◆ Content: Preventive care exercises using the characteristics of water
- ◆ Eligibility and Capacity: 5 people for each course, 65 years old or over, and able to do exercises in the water
 - * One who is approved for care need should be accompanied by the helper who gets into water together.
 - * One who is restricted from exercising by a doctor and one who took the same course previous time is not admitted.
- ◆ Application: Call during June 1st – 10th 9:00 a.m. – 5:00 p.m. (Tue–Sat)
 - * If there are too many applicants, lottery will be held.
- ◆ Place and Inquiries: Water–Bathing Training Room, Ashiya Welfare Center
(Phone: 0797-31-0609)



– Beautiful Legs and Posture Improvement – Walking Training Experience for Health and Beauty

Learn to have a healthy daily walk while learning to walk beautifully !

- ◆ Date and Time: Sun., June 12th 1:30 – 2:30 p.m.
- ◆ Eligibility and Capacity: 15 people, 18 years old or over
- ◆ Cost: 500 yen
- ◆ Instructor: MATSUGAMI Eriko, a walking adviser
- ◆ Location/Application/Inquiries: Visit or Call us.
Gymnasium and Youth Center (Phone: 0797-31-8228)



Canoe Trial Class for Boys and Girls

- ◆ Date and Time: Sat., July 2nd (1) 0:15–2:30 p.m. (2) 2:45–5:00 p.m.
- ◆ Place: Ashiya Marine Center
- ◆ Eligibility: 5–6 graders of elementary schools in Ashiya City
- ◆ Instructor: Instructors include the player for the National Athletic Meet
- ◆ What to bring: A change of clothes, a towel, non-slip shoes, drink, etc.
- ◆ Application: Fill in the application form and send us by June 20.
- ◆ Inquiries: Sports Promotion Section (Phone: 0797-22-7910/Fax: 0797-22-1633)
(E-mail: sport@city.ashiya.lg.jp)



Microchip your dog or cat



Since June 1, 2022, dogs and cats sold through breeders and pet stores are required to be fitted with a microchip. Also the owner's information must be registered.

Inquiries: Environment Section (Phone: 0797-38-2050)



♪ Library Concert ♪

- ◇ Date and Time: Sat., June 25 6:45 p.m.~ The door opens at 6:30p.m.
- ◇ Place: Ashiya Municipal Library
- ◇ Contents: Quartet
- ◇ Capacity: 70 people, Junior high school student and over.
- ◇ Application: Apply by reply-paid postcard (one per person) with name, address and phone number no later than June 10.
※ In case of too many applicants, there will be a drawing.
- ◇ Inquiries: Concert Secretariat (Phone: 070-1785-3211)
- ◇ Mailing address: : 〒659-0052 Ise-cho 12-5 *Toshokan Tomono-kai*
c/o Ashiya Municipal Library



♪ Kominkan Concert ♪

-Afternoon with Flute, Clarinet and Piano-



- ◇ Date and Time: July 30 (Sat.) 2:00 p.m. The door opens at 1:30.
- ◇ Place: Citizen's Center, Annex 219, music room
- ◇ Capacity: 70 people
- ◇ Fee: 500 yen
- ◇ Program: La Flute de Pan by J. Mouquet, Clarinet Polka, *Omoide* by Uno Fumio
Sonatine by Jolivet, Suite Bourgeois by M. H. Arnold, etc.
- ◇ Performers: Fushida Yoriko, flute, Matsubara Hiroki, clarinet, Ukon Yasuko, piano
- ◇ Application: Apply by post card or Fax with the name of the concert, the name(s) and number of participants (up to two persons) no later than July 8 (Fri.).

Inquiries and Mailing Address: Community Learning Center

(Phone: 0797- 35-0700 Fax: 0797-31-4998)

〒659-0068 Narihira-cho 8-24

Instagram of THIS MONTH



tomoe_honda88 さん



8_uai_1 さん

We are accepting your favorite spots in Ashiya. Please submit at #ashiyagram2022
The photos will be published in this feature of the *Koho Ashiya*.

- ✧ The acceptance will be noticed directly from the account @ashiyacity_official
- ✧ Photos must be taken by the applicant him/herself and must be admitted by the subject (in case of person)

PUBLISHED BY

Ashiya Municipal Shio-Ashiya Exchange Center
(Designated administrator: **Ashiya Cosmopolitan Association**)

7-1 Kaiyo-cho Ashiya
Phone : 0797-25-0511

Fax : 0797-25-0512